

An In-Depth Look At Graduation Rates

Office of Institutional Research

Paul Wangerin

Tamara Ferry

October 6, 2014

Purpose

What are graduation rates?

How are they calculated?

Provide Interpretive Context

What Are Graduation Rates?

US Department of Education Definition:

- * **Graduation rate** is the percentage of a school's first-time, full-time, first-year undergraduate students who complete their program within 150% of the normal time for completion of the program. For example, for a four-year degree program, entering students who complete within six years are counted as graduates.
- * This **annual** component of [IPEDS](#) was added in 1997 to help institutions satisfy the requirements of the Student Right-to-Know legislation.

How Are They Calculated?

US Department of Education **defines cohort** as:

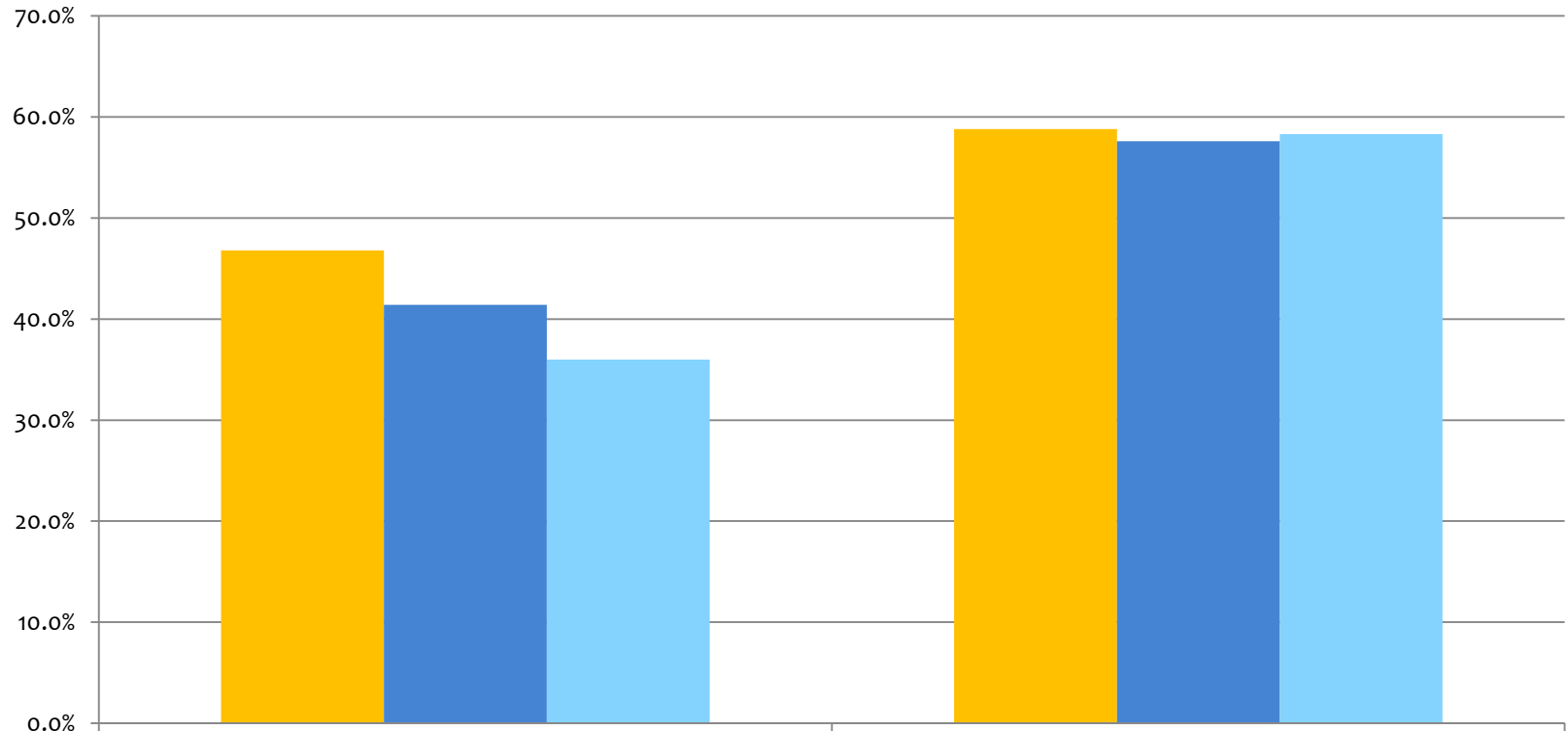
- * First-time, full-time bachelor's degree seeking students – entering the institution
- * Traditional undergraduate students
- * Report on status of originally defined cohort

How Are They Calculated? (6 years later)

US Department of Education Defined:

1. Earned a bachelor's degree or higher in 4 years or less
(**4-year graduation rate**)
2. Earned a bachelor's degree or higher in more than 4 years but less than 5 years
3. Earned a bachelor's degree or higher in more than 5 years but less than 6 years
4. Transferred out to an affiliated degree granting university as part of a collaborative **designed** transfer program
5. Did not attain a degree

4 and 6 Year Graduation Rate Comparison



4-Years or less

6-Years or less

■ National

46.8%

58.8%

■ WAICU

41.4%

57.6%

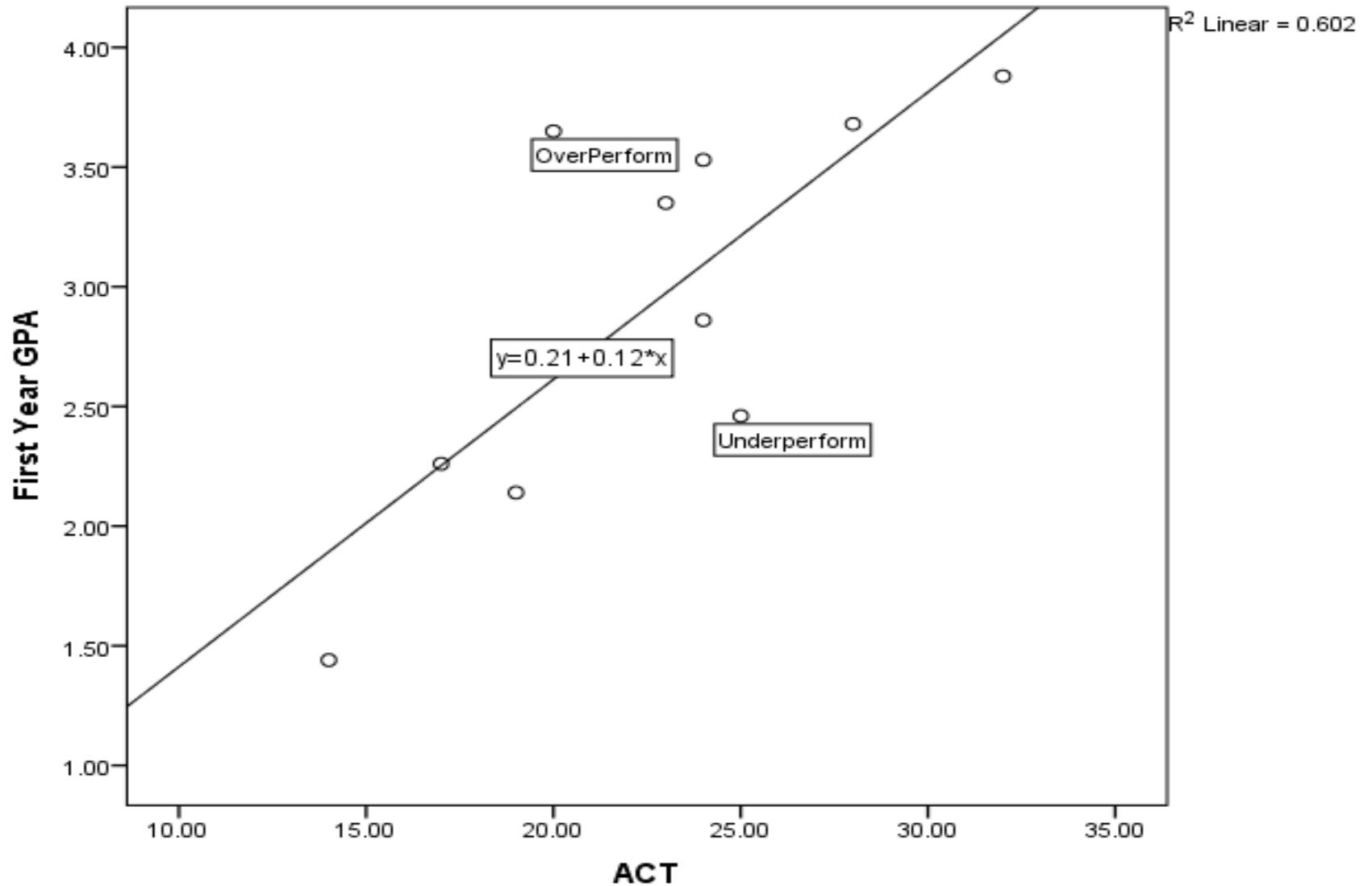
■ CUW

36.0%

58.3%

Interpretive Context

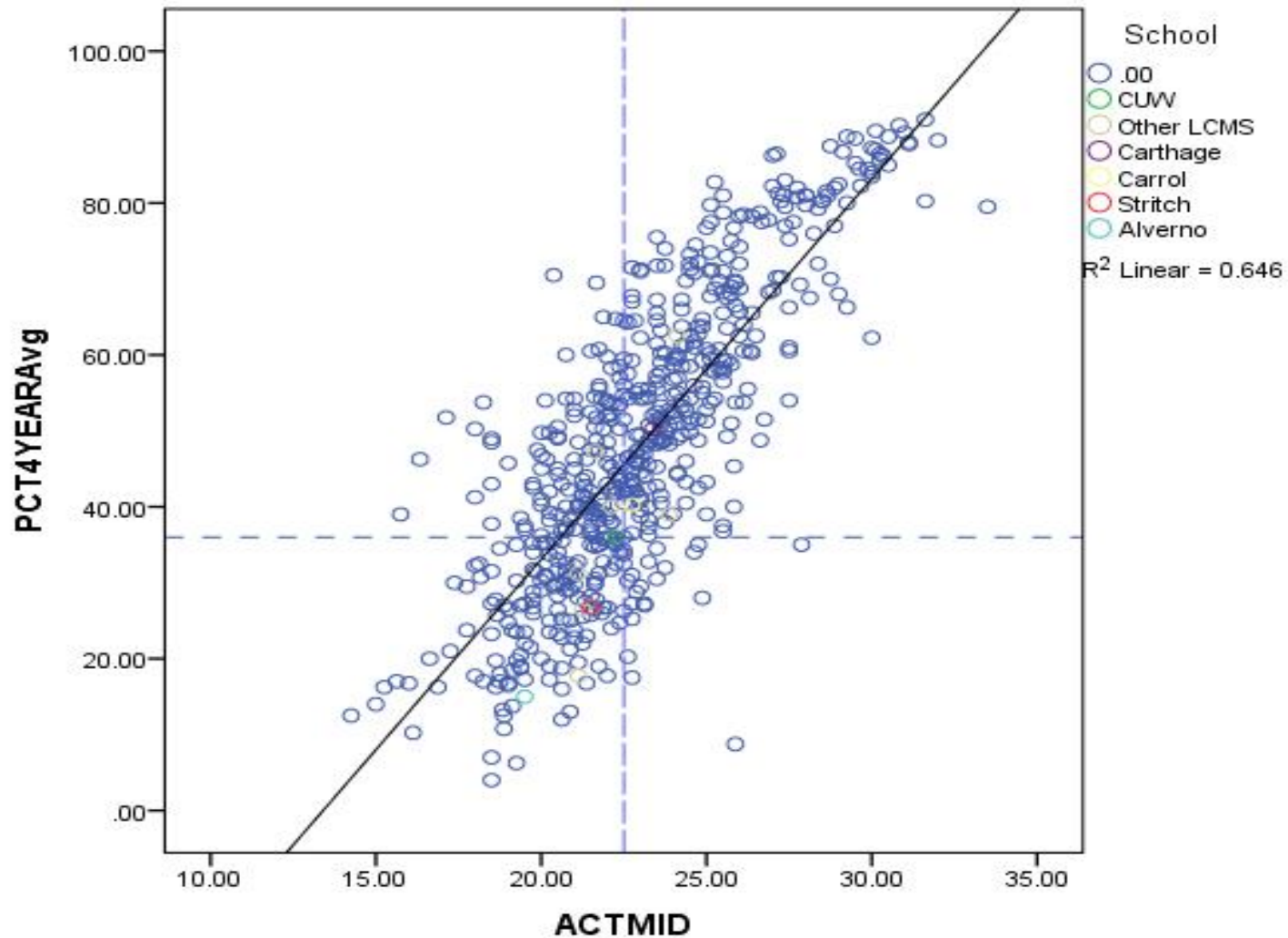
Example: Correlation of ACT and First Year College GPA



4-Year Graduation Rate Predicted from Academic Ability

	Avg. ACT	Predicted	Actual	Perform
CUW	22.25	44.4%	36.0%	-8.4%
Carroll	22.75	46.9%	40.3%	-6.6%
Carthage	23.38	49.9%	50.3%	0.4%
Cardinal Stritch	21.50	40.6%	26.8%	-13.9%
Alverno	19.50	30.6%	15.0%	-15.6%
National Average	22.87		46.8%	

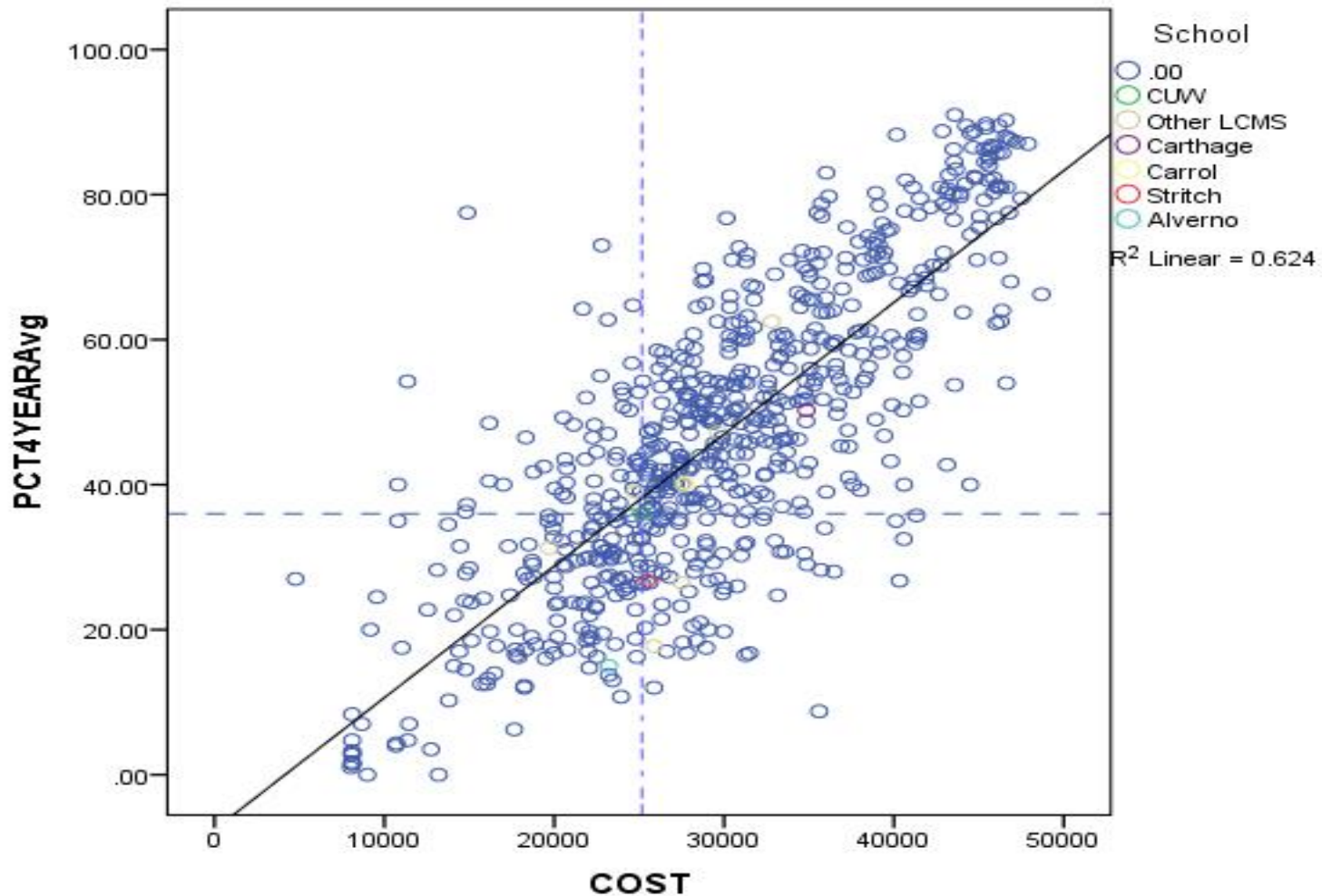
4-Year Graduation Rate Predicted from ACT



4-Year Graduation Rate By Cost

	Tuition	Predicted	Actual	Perform
CUW	\$25,160	38.2%	36.0%	-2.2%
Carroll	\$27,724	42.8%	40.3%	-2.6%
Carthage	\$34,850	55.8%	50.3%	-5.5%
Cardinal Stritch	\$25,450	38.7%	26.8%	-12.0%
Alverno	\$23,231	34.7%	15.0%	-19.7%
National Average	\$28,449		46.8%	

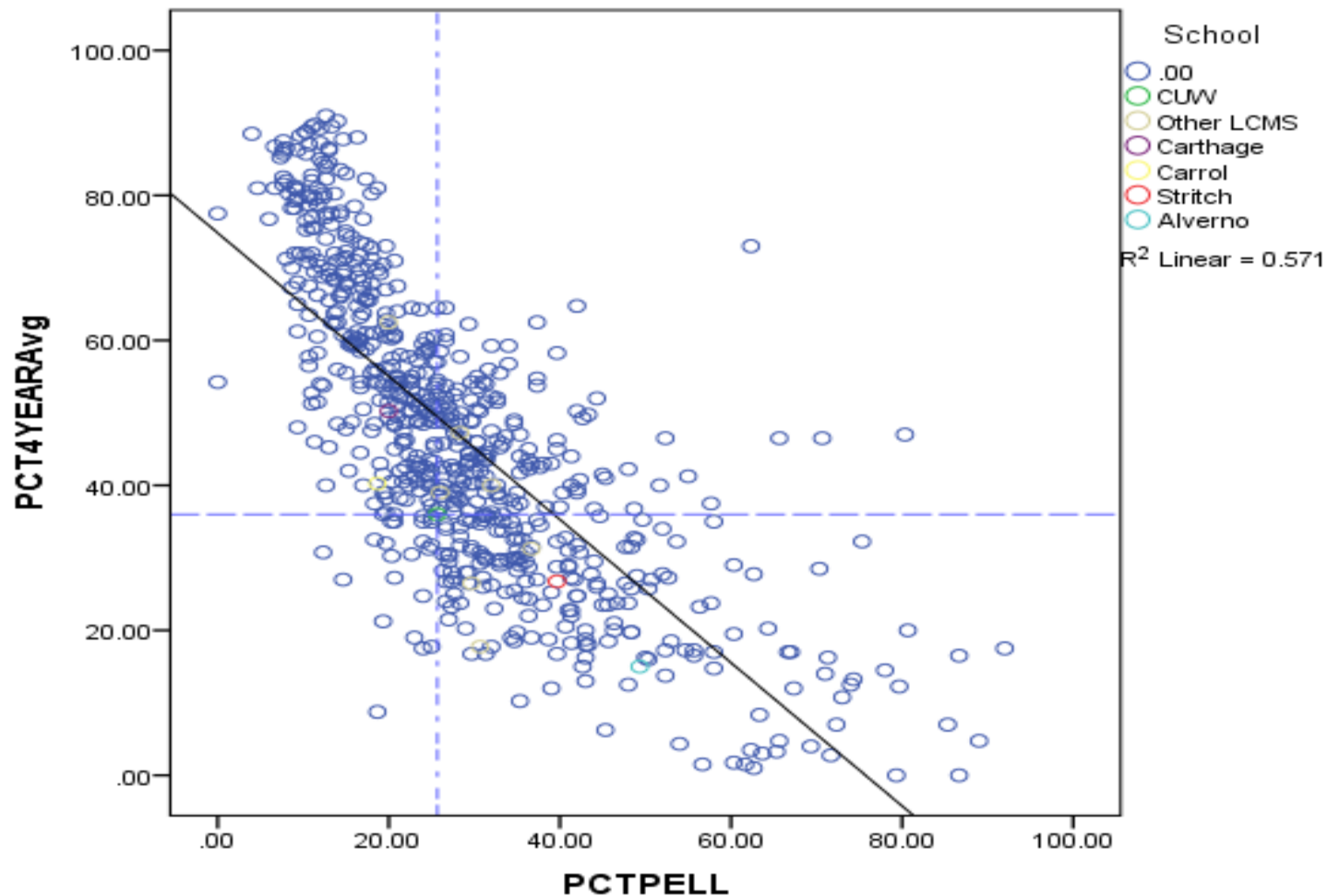
4-Year Graduation Rate By Cost



4-Year Graduation Rate Predicted from Financial Need

	PELL %	Predicted	Actual	Perform
CUW	25.7%	49.4%	36.0%	-13.4%
Carroll	18.7%	56.4%	40.3%	-16.1%
Carthage	20.0%	55.1%	50.3%	-4.8%
Cardinal Stritch	39.7%	35.6%	26.8%	-8.9%
Alverno	49.3%	26.1%	15.0%	-11.1%
National Average	30.14%		49.4%	

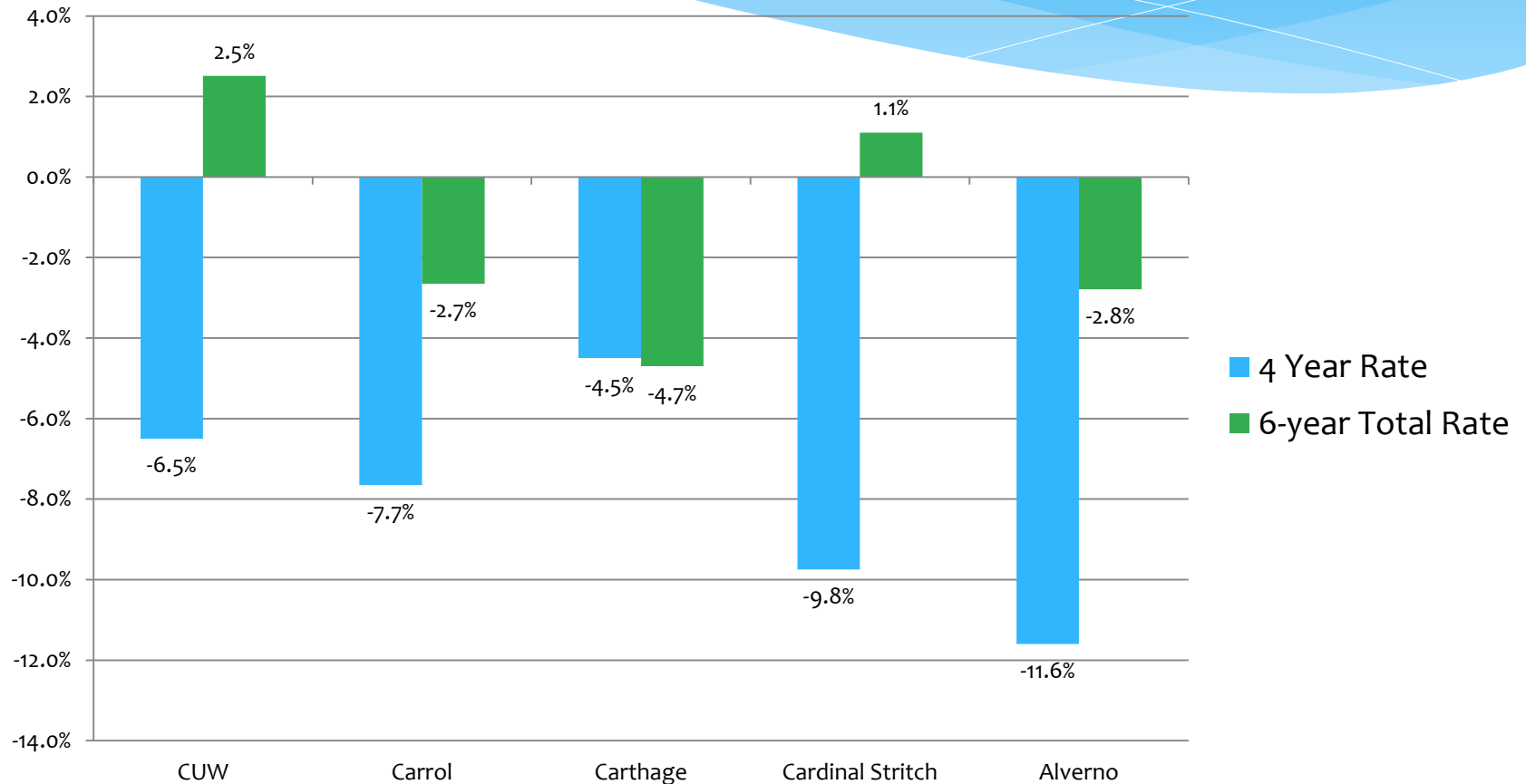
4-Year Graduation Rate Predicted from Financial Need



Putting It All Together

	4-Year Graduation Rates (Combined 2010-2013)			6-year Graduation Rates (Combined 2010-2013)		
	Actual	Predicted*	Perform	Actual	Predicted*	Perform
CUW	36.0%	42.5%	-6.5%	58.3%	55.7%	2.5%
Carroll	40.3%	47.9%	-7.7%	57.5%	60.2%	-2.7%
Carthage	50.3%	54.8%	-4.5%	60.5%	65.2%	-4.7%
Cardinal Stritch	26.8%	36.5%	-9.8%	51.5%	50.4%	1.1%
Alverno	15.0%	26.6%	-11.6%	38.8%	41.5%	-2.8%
NATIONAL Average	46.9%			58.9%		

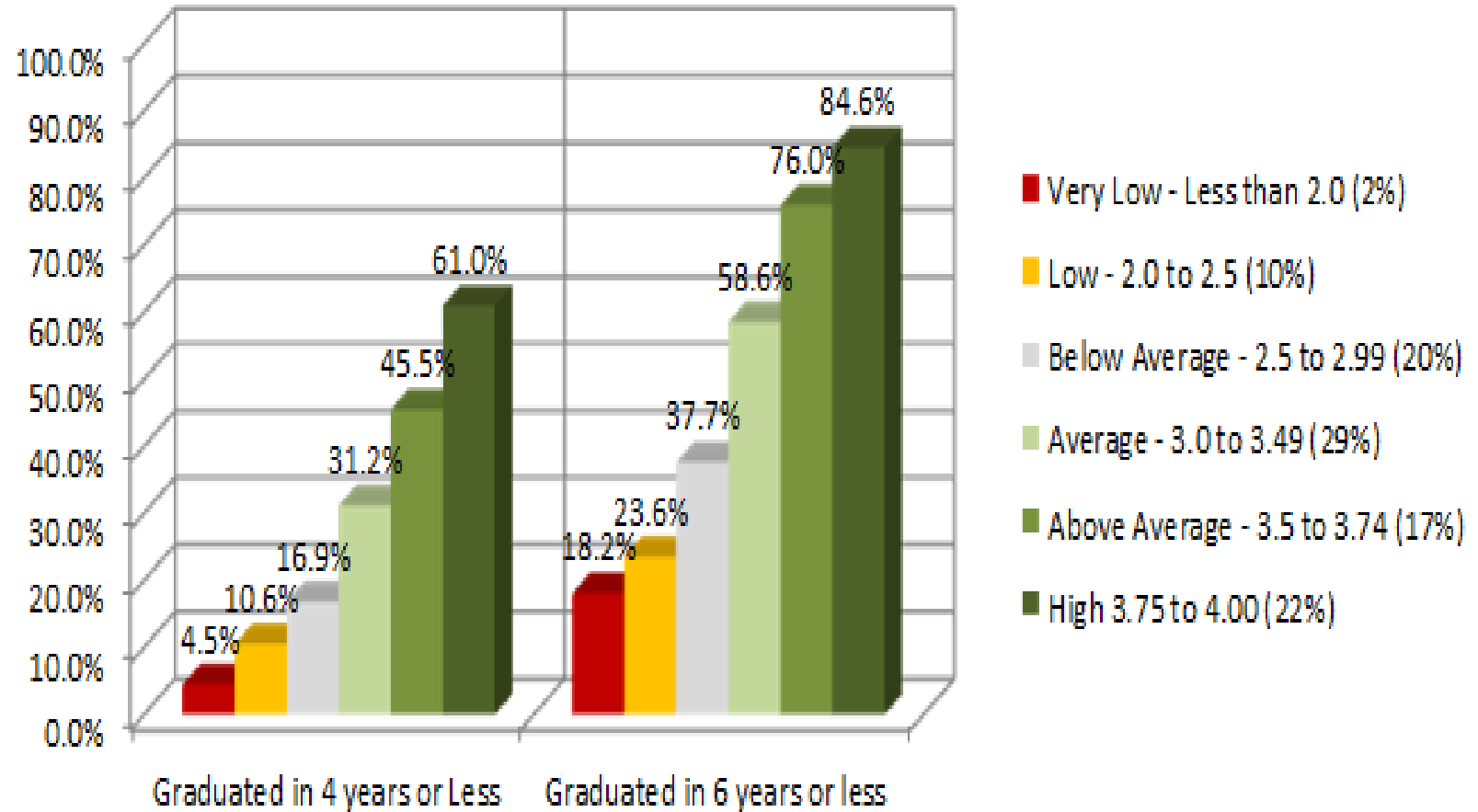
4 and 6 year Graduation Rates Relative to Expectation from Full Predictive Model



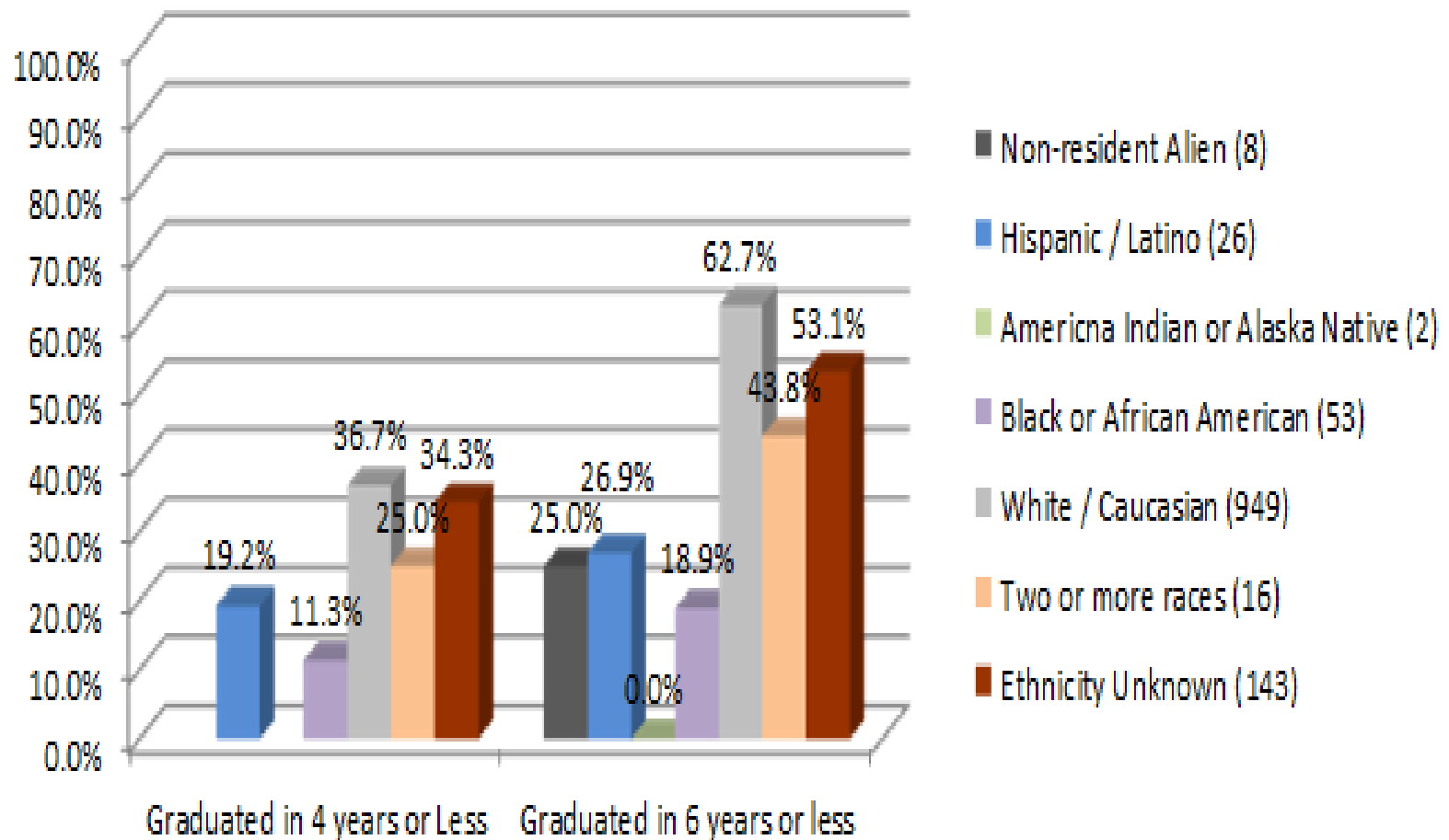
SUMMARY OF 4 AND 6 YEAR GRADUATION RATES FOR WAICU (2010 to 2013 Combined Data)

SCHOOL	4 YR RATE	RANK	6 YR RATE	RANK	RANK DIFF	SCHOOL	4 YR RATE	RANK	6 YR RATE	RANK	RANK DIFF
Beloit	68.3	1	77.3	2	1	MSOE	37.5	12	57.5	10	-2
Saint Norbert	67.3	2	74.0	4	2	CUW	36.0	13	58.3	8	-5
Lawrence	60.5	3	76.3	3	0	Edgewood	31.3	14	54.5	12	-2
Marquette	60.0	4	80.0	1	-3	Lakeland	30.8	15	45.8	18	3
Ripon	58.0	5	71.8	5	0	Viterbo	30.0	16	49.8	17	1
Carthage	50.3	6	60.5	7	1	Marian	29.0	17	51.0	16	-1
MIAD	47.3	7	57.8	9	2	Cardinal Stritch	26.8	18	51.5	15	-3
Northland	45.5	8	53.5	14	6	Silver Lake	25.3	19	39.3	20	1
Wisconsin Lutheran	43.3	9	60.8	6	-3	Mount Mary	21.8	20	39.8	19	-1
Carroll	40.3	10	57.5	10	0	Alverno	19.5	21	38.8	21	0
Northland	39.8	11	54.3	13	2						

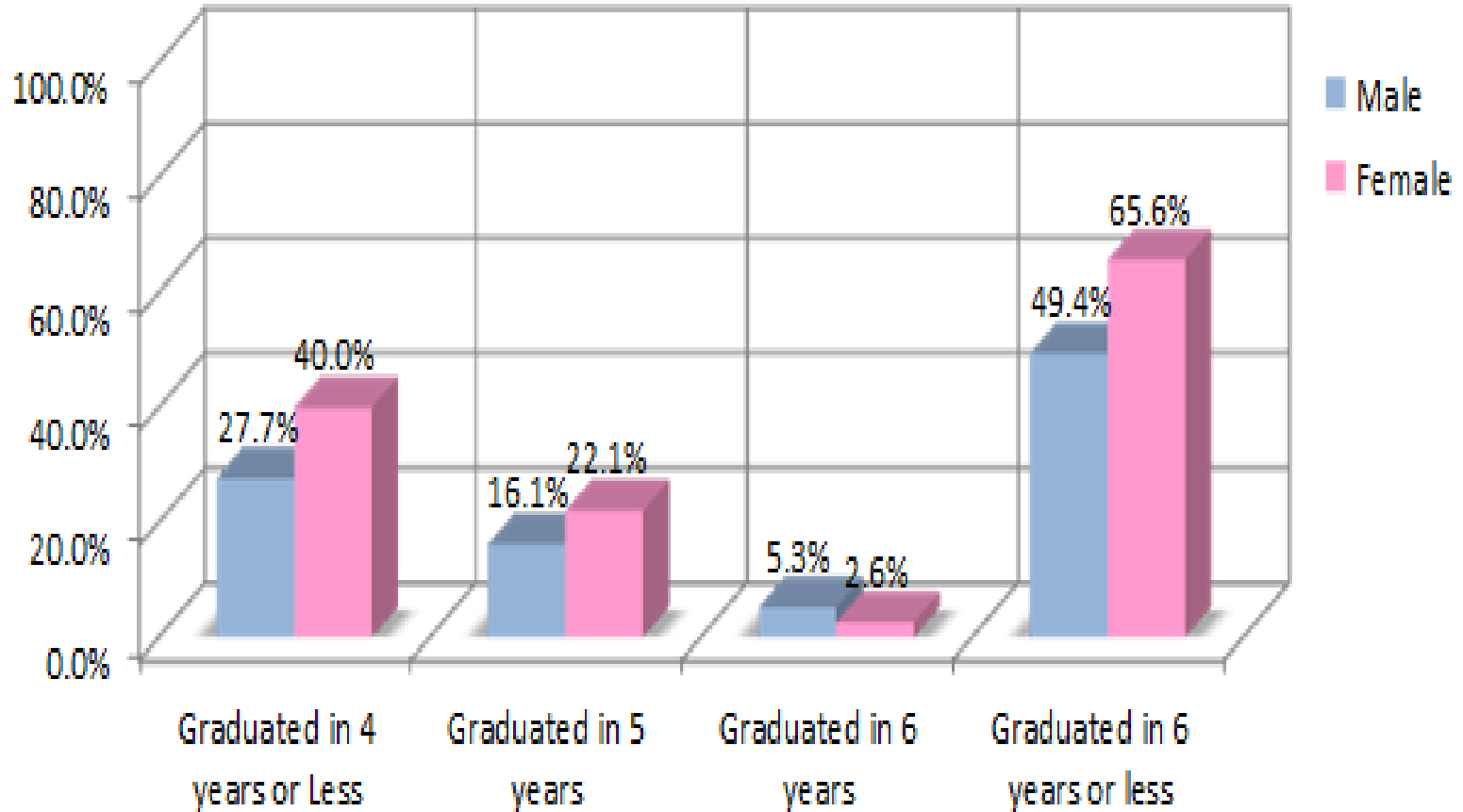
4-Year and Total Graduation Rates by HSGPA



4-Year and Total Graduation Rates by Ethnicity



Graduation Rates by Gender



QUESTIONS?